

# Cover Pool Quarterly Review

2nd Quarter 2022

Data as of 30<sup>th</sup> June 2022

CAJA RURAL DE NAVARRA



# Index

1. Total Cover Pool Overview
2. Total Cover Pool Analysis
3. Residential/Commercial Cover Pool Overview
4. Residential Cover Pool Analysis
5. Commercial Cover Pool Analysis
6. Outstanding Covered Bonds



# 1. Total Cover Pool

## Overview

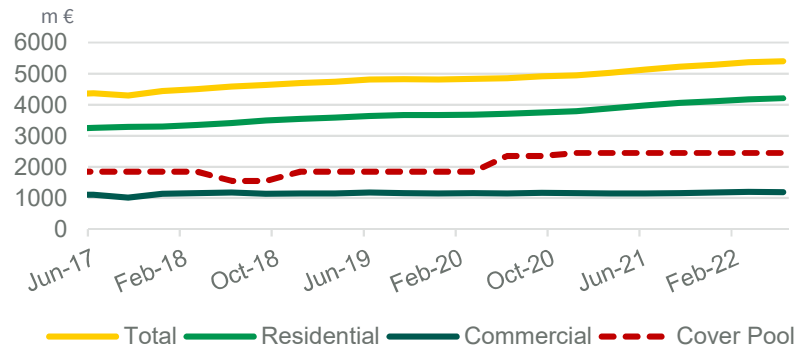


<b>Total cover assets</b>	€5,400m
<b>Number of loans</b>	49,114
<b>Number of borrowers</b>	72,196
<b>Average loan size</b>	€109,959
<b>WA LTV (%)</b>	59.96%
<b>WA seasoning (months)</b>	73.10
<b>WA remaining maturity (years)</b>	19.41
<b>Average rate (%)</b>	1.15%
<b>Floating rate loans (%)</b>	66.97%
<b>Arrears &gt;90 days</b>	0.85%
<b>Loans in Euros (%)</b>	100.00%
<b>Substitution Assets</b>	€ 0m
<b>Outstanding covered bonds</b>	€2,450m
<b>Fixed rate covered bonds (%)</b>	100.00%
<b>Total overcollateralization (%)</b>	120.43%

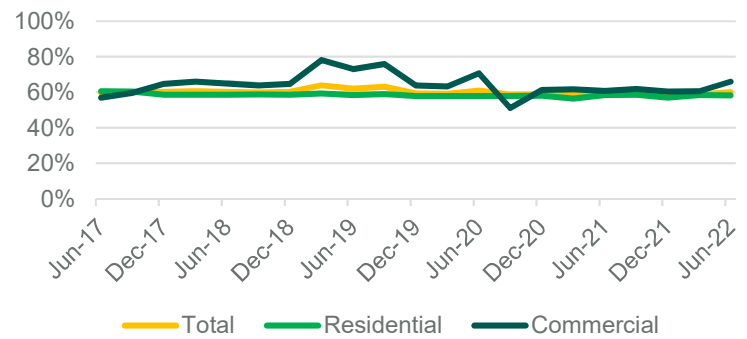
# 2. Total Cover Pool Analysis



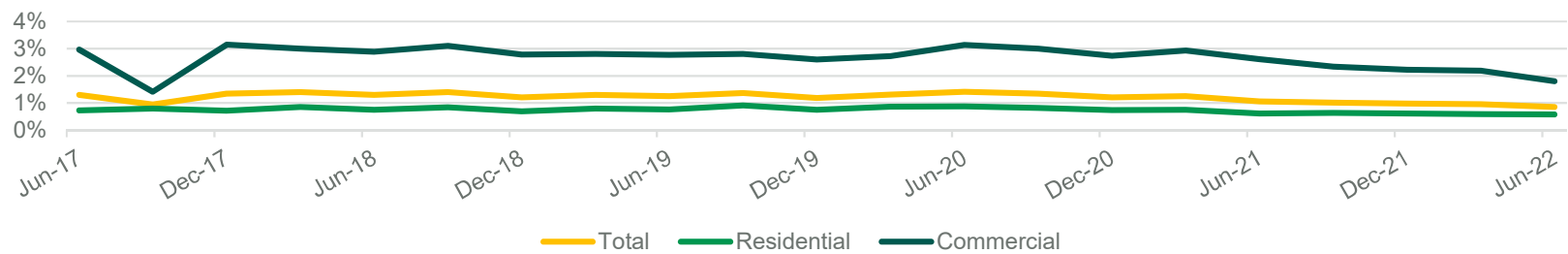
**MORTGAGE COVER POOL**



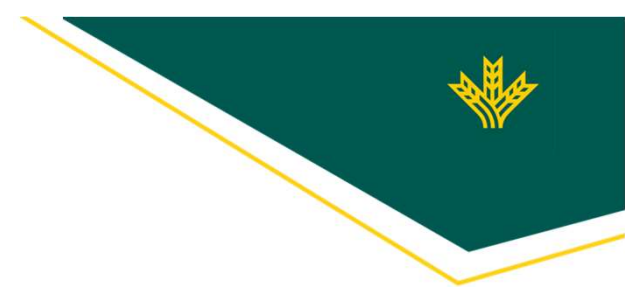
**LOAN TO VALUE (LTV)**



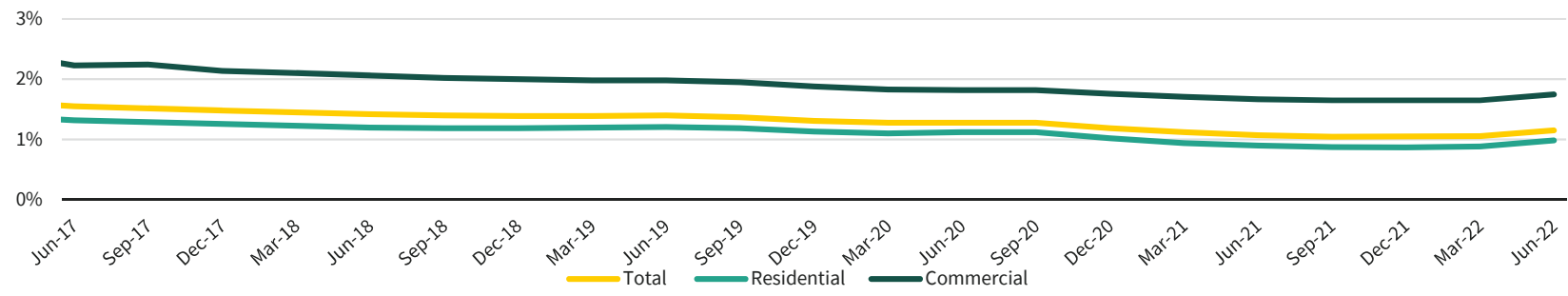
**NON PERFORMING LOANS (NPL)**



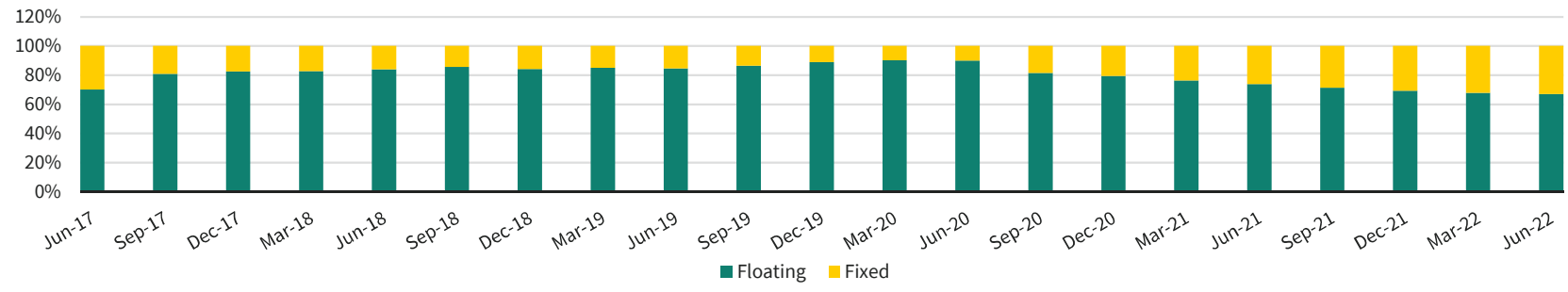
# 2. Total Cover Pool Analysis



## AVERAGE INTEREST RATE



## INTEREST RATE TYPE

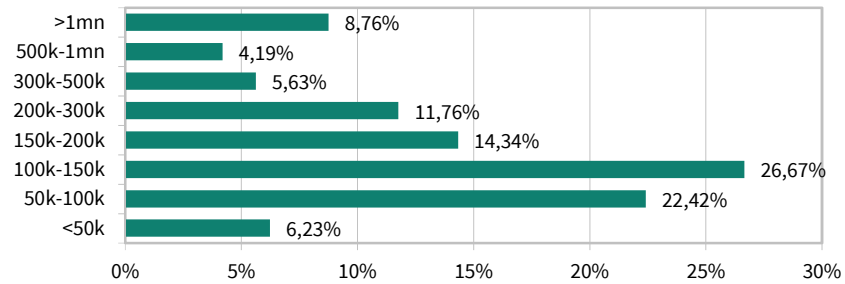


Data as of 30<sup>th</sup> June 2022

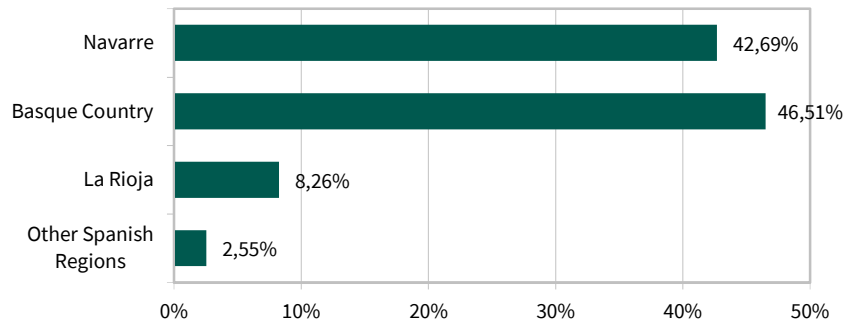
# 2. Total Mortgage Portfolio Analysis



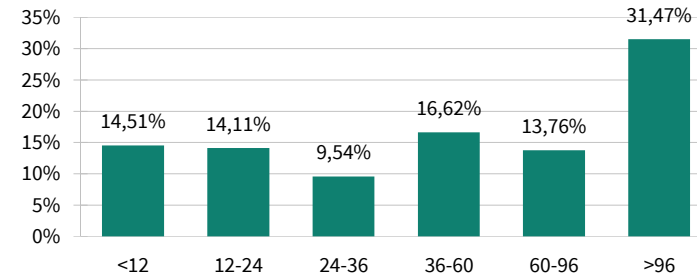
## CURRENT LOAN BALANCE<sup>1</sup>



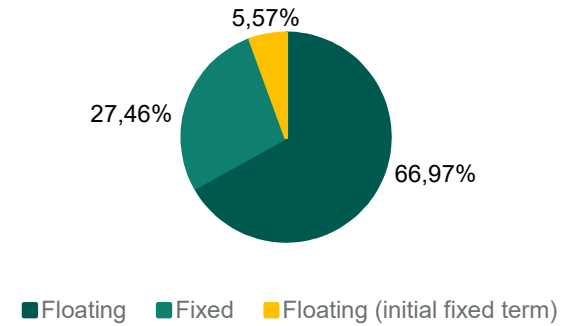
## GEOGRAPHICAL DISTRIBUTION



## LOAN SEASONING



## REFERENCE RATE



<sup>1</sup> Current Loan Balance calculated on a WA basis  
Data as of 30<sup>th</sup> June 2022

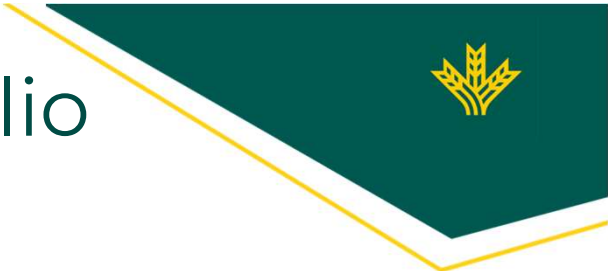
# 3. Residential/Commercial Cover Pool

## Overview

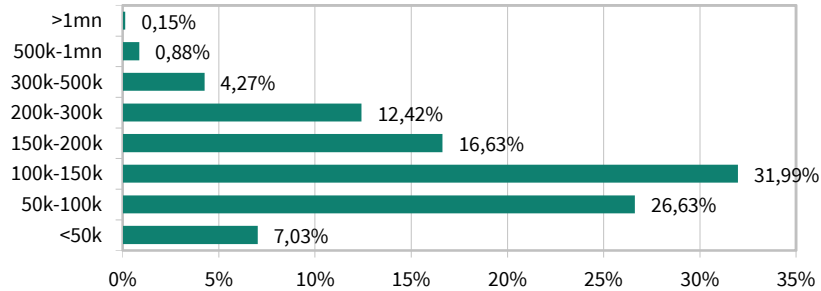


RESIDENTIAL		COMMERCIAL	
Total cover assets	€4,209 m	Total cover assets	€1,191 m
Number of loans	43,782	Number of loans	5,332
Number of borrowers	67,241	Number of borrowers	4,955
Average loan size	€96,137	Average loan size	€223,455
Interest only loans	0.18%	Interest only loans	0.95%
WA LTV (%)	58.25%	WA LTV <sup>(1)</sup> (%)	66.03%
WA Seasoning (months)	78.42	WA Seasoning (months)	54.33
WA Remaining Maturity (years)	22.07	WA Remaining Maturity (years)	10.03
WA Rate (%)	0.99%	WA Rate (%)	1.75%
Floating Rate loans (%)	68.52%	Floating Rate loans (%)	61.48%
Arrears >90 days (%)	0.58%	Arrears >90 days (%)	1.81%
10 largest exposures (%)	0.24%	10 largest exposures (%)	7.38%
RESIDENTIAL GEOGRAPHICAL DISTRIBUTION		COMMERCIAL GEOGRAPHICAL DISTRIBUTION	
Navarre	43.98%	Navarre	38.12%
Basque Country	46.78%	Basque Country	45.55%
La Rioja	7.00%	La Rioja	12.70%
Other Spanish regions	2.24%	Other Spanish regions	3.63%

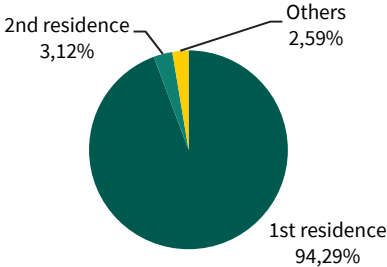
# 4. Residential Mortgage Portfolio Analysis



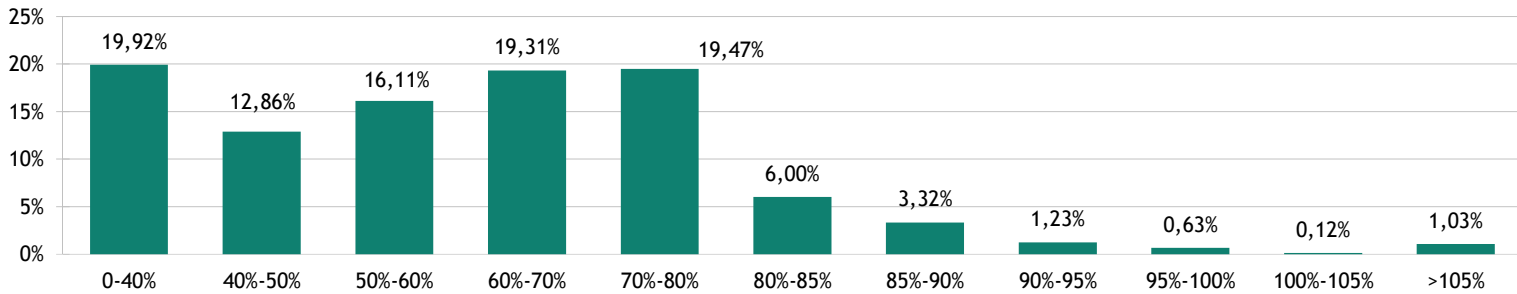
**RESIDENTIAL BREAKDOWN BY LOAN SIZE <sup>1</sup>**



**RESIDENTIAL BREAKDOWN BY PROPERTY TYPE <sup>2</sup>**



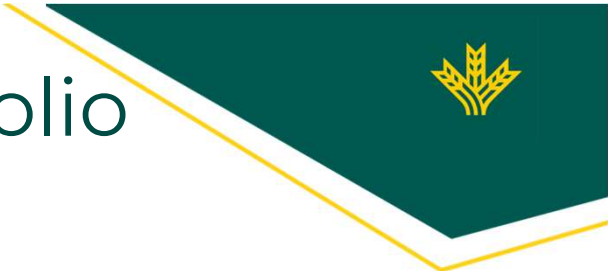
**RESIDENTIAL BREAKDOWN BY LTV**



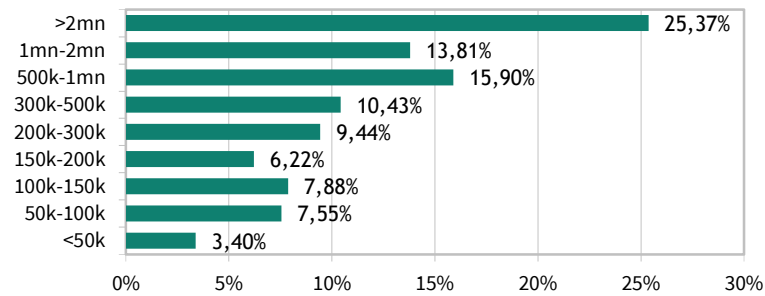
<sup>1</sup> Current Loan Balance calculated on a WA basis  
<sup>2</sup> Category "Others" includes housing  
 Data as of 30<sup>th</sup> June 2022



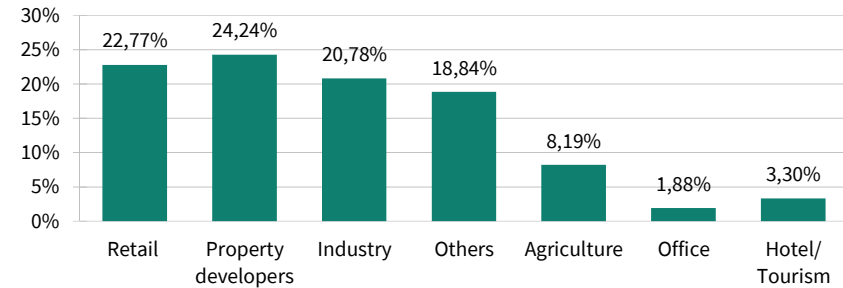
# 5. Commercial Mortgage Portfolio Analysis



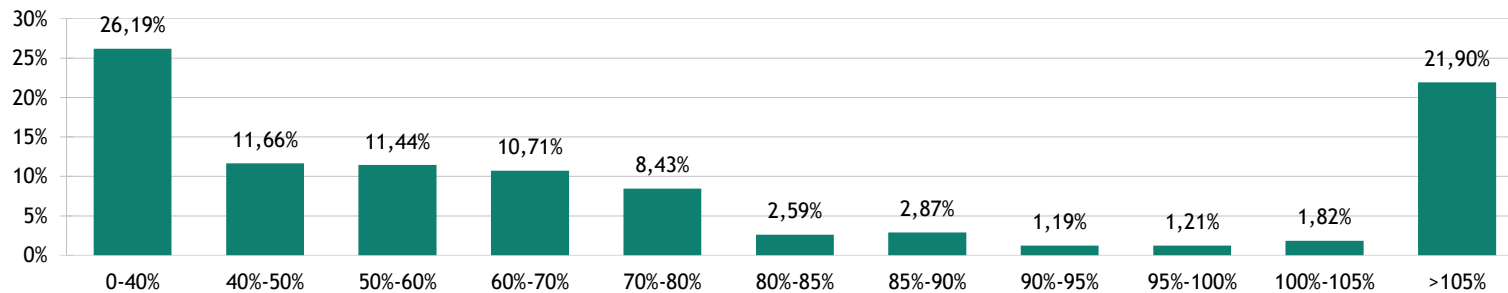
**COMMERCIAL BREAKDOWN BY LOAN SIZE<sup>1</sup>**



**COMMERCIAL BREAKDOWN BY PROPERTY TYPE<sup>2</sup>**



**COMMERCIAL BREAKDOWN BY LTV**

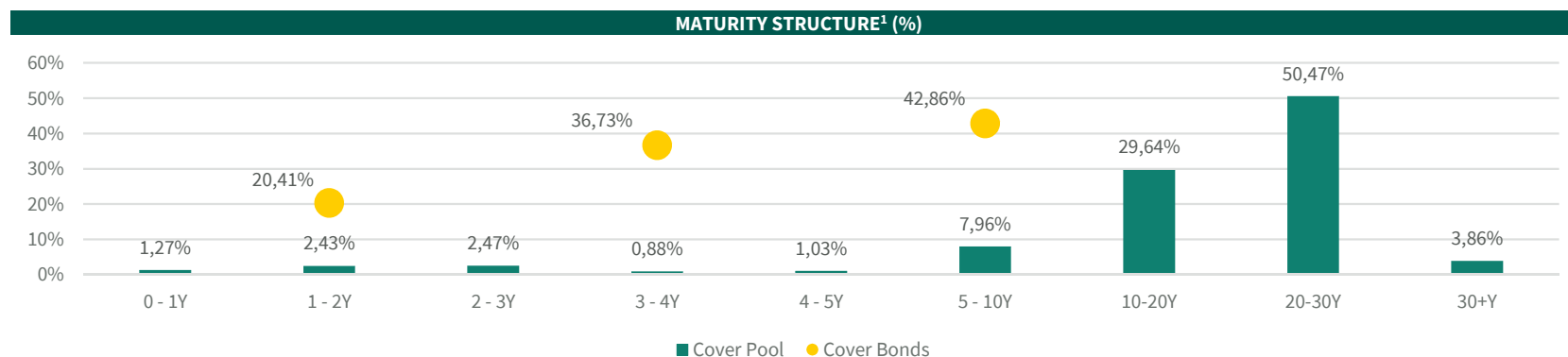


<sup>1</sup> Current Loan Balance calculated on a WA basis  
<sup>2</sup> Category "Others" includes housing  
 Data as of 30<sup>th</sup> June 2022

# 6. Outstanding Covered Bonds



ISIN	AMOUNT	FINANCING	RATE	MATURITY	CCY	RATING
ES0415306051	500M	Public issue	Fixed rate	1-12-2023	EUR	Aa1
ES0415306069	600M	Public issue	Fixed rate	8-05-2025	EUR	Aa1
ES0415306077	300M	Retained issue	Fixed rate	27-11-2025	EUR	Aa1
ES0415306085	500M	Retained issue	Fixed rate	7-04-2027	EUR	Aa1
ES0415306028	50M	Private Placement	Fixed rate	7-02-2029	EUR	Aa1
ES0415306093	500M	Public issue	Fixed rate	9-02-2029	EUR	Aa1



<sup>1</sup> Cover Assets maturity calculated on a final maturity basis  
Data as of 30<sup>th</sup> June 2022

# Contacts



## **Headquarters**

---

Caja Rural de Navarra

Plaza de los Fueros, 1

31003 Pamplona

Navarre - Spain

Tel: +34 948 168100

[www.cajaruraldenavarra.com](http://www.cajaruraldenavarra.com)

Investor Relations: [investor.relations@crnavarra.com](mailto:investor.relations@crnavarra.com)

## **Miguel García de Eulate Martín-Moro**

---

Head of Treasury and Capital Markets

Tel: +34 948 168198

E-mail: [miguel.garciadeeulate@cajarural.com](mailto:miguel.garciadeeulate@cajarural.com)

## **Beatriz Fernández de Arcaya Rotellar**

---

Capital Markets - Investor Relations

Tel: +34 948 168281

E-mail: [beatriz.fernandezdearcaya@cajarural.com](mailto:beatriz.fernandezdearcaya@cajarural.com)

# Disclaimer



@2022 Caja Rural de Navarra, Sociedad Cooperativa de Crédito. All rights reserved.

This document was created exclusively for the purpose of giving corporate presentations by Caja Rural de Navarra. This presentation may only be shown to business and institutional clients.

This document may not be modified nor shared with third parties without the express consent of Caja Rural de Navarra. Anyone in possession of this document must be aware and comply with the legal regulations governing the possession and sharing of such information. This presentation may not be shared with nor transmitted to any country with laws restricting the sharing or transmission of such information.

In no event will Caja Rural de Navarra, its related corporations, or the employees thereof be liable to anyone for any decision made or action taken in reliance on the information in this document or for any consequential damages.

This presentation is exclusively for general information purposes. It does not represent an offer to conclude an agreement on the provision of investment advisory services or the purchase of securities. Where this presentation cites information either not originating from Caja Rural de Navarra or not produced at its request, such information was compiled from sources deemed reliable without being verified. However, Caja Rural de Navarra does not guarantee that such information is complete or correct. Caja Rural de Navarra assumes no responsibility or liability whatsoever for expenses, losses or damage resulting from or in connection with the use of all or part of the information contained in this presentation.

Caja Rural de Navarra cautions that this presentation may contain forward looking statements with respect to the business financial condition, results of operations, strategy, plans and objectives of the Caja Rural de Navarra. While these forward looking statements represent our judgement and future expectations concerning the development of our business, a certain number of risks, uncertainties and other relevant factors could cause actual developments and results to differ materially from our expectations. These factors include, but are not limited to: (1) general market, Macroeconomic, governmental, political and regulatory trends; (2) movements in local and international securities markets, currency exchange rate and interest rates; (3) competitive pressures; (4) technical developments; (5) changes in the financial position or credit worthiness of our customers, obligors and counterparts. These factors could adversely affect our business and financial performance published in our past and future filings and reports, including those with the Spanish Securities Market Commission (Comisión Nacional del Mercado de Valores).